

PQ Welcome to BootMagic



Supported Operating Systems

 **Trademarks**

<http://www.powerquest.com>
sales@powerquest.com

After Installing BootMagic

NOTE:
System

[Finding the Right Operating](#)

 **Additional Resources**

<http://www.powerquest.com>

How to Use Help

green

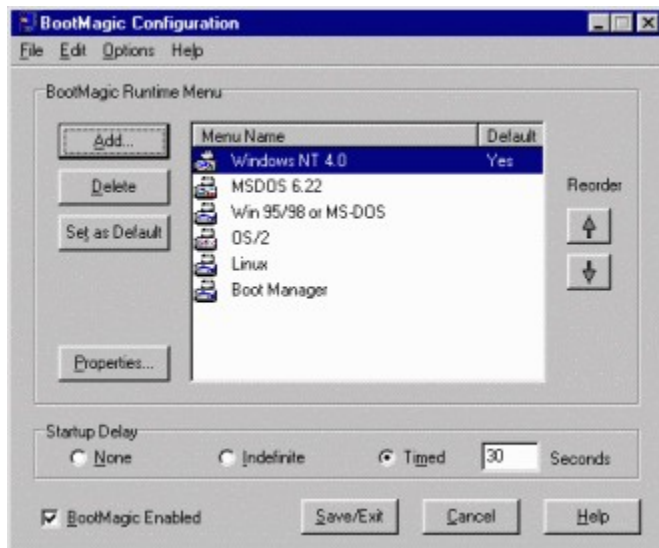
BLUE

NOTE:

RED

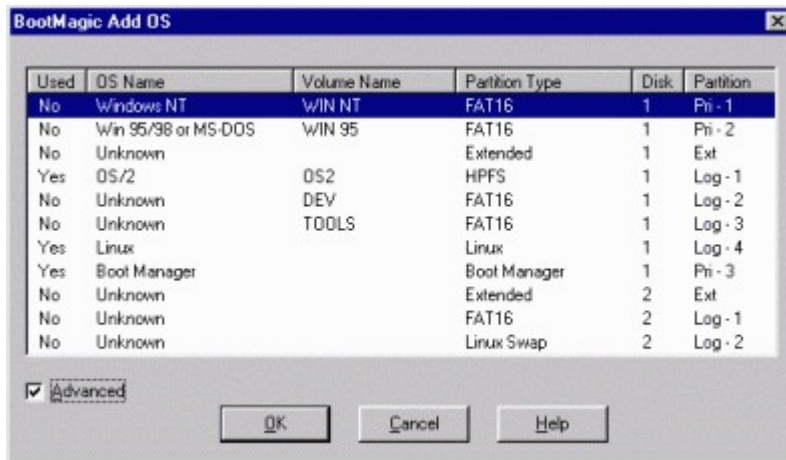
WARNING!

BootMagic Configuration Program Overview



NOTE:

PQ Adding an Operating System to the BootMagic Menu



The screenshot shows a window titled "BootMagic Add OS" with a table listing detected operating systems and their partitions. The table has columns for "Used", "OS Name", "Volume Name", "Partition Type", "Disk", and "Partition".

Used	OS Name	Volume Name	Partition Type	Disk	Partition
No	Windows NT	WIN NT	FAT16	1	Pri - 1
No	Win 95/98 or MS-DOS	WIN 95	FAT16	1	Pri - 2
No	Unknown		Extended	1	Ext
Yes	OS/2	OS2	HPFS	1	Log - 1
No	Unknown	DEV	FAT16	1	Log - 2
No	Unknown	TODLS	FAT16	1	Log - 3
Yes	Linux		Linux	1	Log - 4
Yes	Boot Manager		Boot Manager	1	Pri - 3
No	Unknown		Extended	2	Ext
No	Unknown		FAT16	2	Log - 1
No	Unknown		Linux Swap	2	Log - 2

At the bottom of the window, there is a checked checkbox labeled "Advanced" and three buttons: "OK", "Cancel", and "Help".

NOTE:

[Operating System](#)

[Finding the Right](#)

[the Right Operating System](#)

[Finding](#)

WARNING!

NOTE:

[BootMagic Menu Item Properties](#)

Finding the Right Operating System

NOTE:

[BootMagic Menu Item Properties](#)
[Removing an Operating System](#)

Modifying an Operating System's BootMagic Properties

NOTE:

[BootMagic Menu Item Properties](#)



BootMagic Menu Item Properties

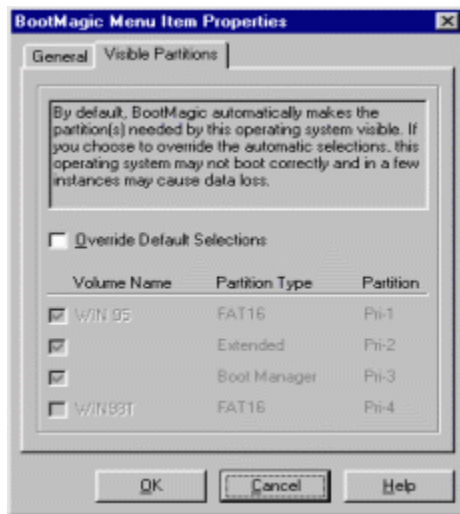
Partitions

General

Visible



NOTE:



NOTE:

Removing an Operating System from the BootMagic Menu

NOTE:

Setting a Default Operating System

NOTE:

[Setting the Startup Delay](#)

Setting the Startup Delay

NOTE:

NOTE:

Disabling BootMagic

NOTE:

NOTE:

Installing a New Operating System

[Creating an Operating System Boot Diskette](#)

NOTE:

[DOS](#)
[Windows 3.x](#)
[Windows 95/98](#)
[Windows NT](#)
[OS/2](#)
[BeOS](#)
[Linux](#)

[primary](#) [logical](#)



DOS - Installation Issues

NOTE:

[Booting Operating Systems From a Second Drive](#)



Windows 3.x - Installation Issues

NOTE:

DOS

NOTE:



Windows 95/98 - Installation Issues

NOTE:

[Booting Operating Systems From a Second Drive](#)

NOTE:

Windows NT 3.5x/4.0 - Installation Issues

NOTE:

[Visible Partitions](#)



OS/2 - Installation Issues

NOTE:

<ftp://ftp.software.ibm.com/ps/products/os2/os2ddpak/idedasd.exe>



BeOS - Installation Issues



Linux - Installation Issues

Booting Operating Systems From a Second Drive

NOTE:

[DOS](#)
[Windows 3.x](#)
[Windows 95/98](#)
[Windows NT](#)
[OS/2](#)
[BeOS](#)
[Linux](#)

NOTE:

Third Drive Booting and Beyond

Boot Management Software

Drive Overlay Software

NOTE:

Anti-Virus Software

Frequently-Asked Questions

NOTE:

NOTE:

[Adding an Operating System](#)

Right Operating System

Finding the

Right Operating System

Finding the

Right Operating System

Finding the

Recovering a Failed Operating System

[DOS](#) [Windows 95/98](#)

[Windows NT](#)

NOTE:

NOTE:

[Creating an Operating System Boot Diskette](#)

NOTE:

NOTE:

NOTE:

NOTE:

NOTE:

Creating an Operating System Boot Diskette



Error Messages and Solutions

[General Errors \(0-49\)](#)

[Menu Item & Configuration Errors \(50-99\)](#)

[Boot Errors \(100-149\)](#)

[File and Disk I/O Errors \(150-199\)](#)

[Parser Read/Write and General Errors \(200-249\)](#)

[Partition Table and Boot Record Errors \(250-274\)](#)

[BootMagic Configuration Errors \(1000-1499\)](#)

NOTE:

<http://www.powerquest.com>

[PowerQuest Technical Support](#)

[Anti-Virus Software](#) [Drive Overlay Software](#)

[Anti-Virus Software](#) [Drive Overlay Software](#)

[PowerQuest Technical Support](#)

 **PowerQuest Technical Support**

<http://www.powerquest.com>

[PowerQuest Problem Report](#)

[PowerQuest Problem](#)

[Report](#)

support@powerquest.com

italian@powerquest.com

latina@powerquest.com

spanish@powerquest.com

euots@powerquest.com

euots@powerquest.com

euots@powerquest.com

france@powerquest.com

germany@powerquest.com

[PowerQuest Problem Report](#)

[PowerQuest Problem Report](#)

Problem Report

